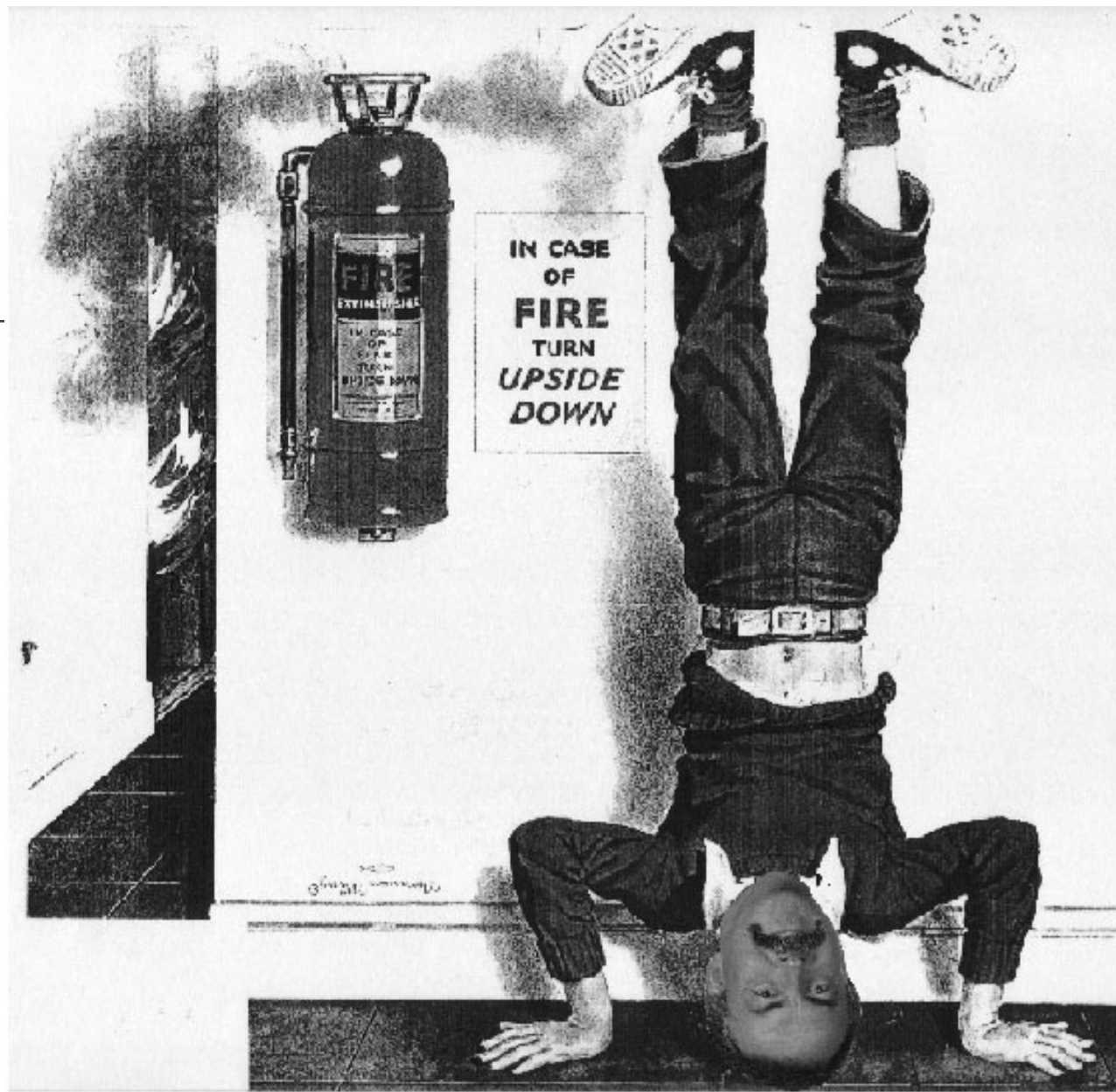


December 10th Board Meeting







Code in Mechanical: No Code required
Code - Final location - all disciplines

Code in Mechanical: No in @ Stages Test
Code in Mechanical: End of work - okay -

Code in Mechanical: Okay

Code in Mechanical: Bid alternate

Code in Mechanical: Okay -

Code in Mechanical: Okay

Code in Mechanical: Okay

Code in Mechanical: Okay -

Code in Mechanical: CAT 5

Code in Mechanical: Code Adopt

Code in Mechanical: CAT 5

Code in Mechanical: Okay

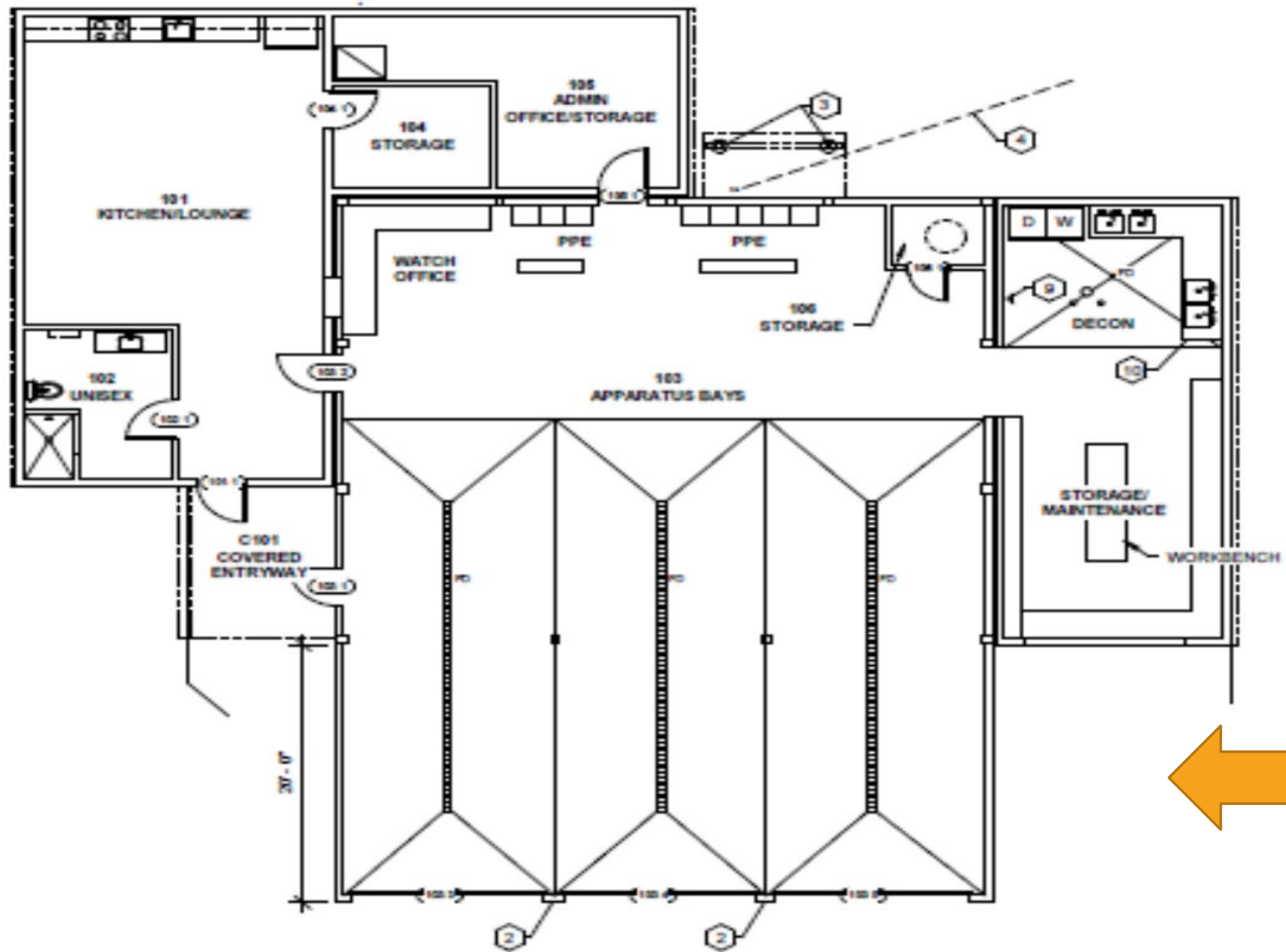
Code in Mechanical: Rain Garden / Oil separator

Code in Mechanical: Okay -

Code in Mechanical: Mechanical

Code in Mechanical: Okay

Vestibule -
Bid alternate



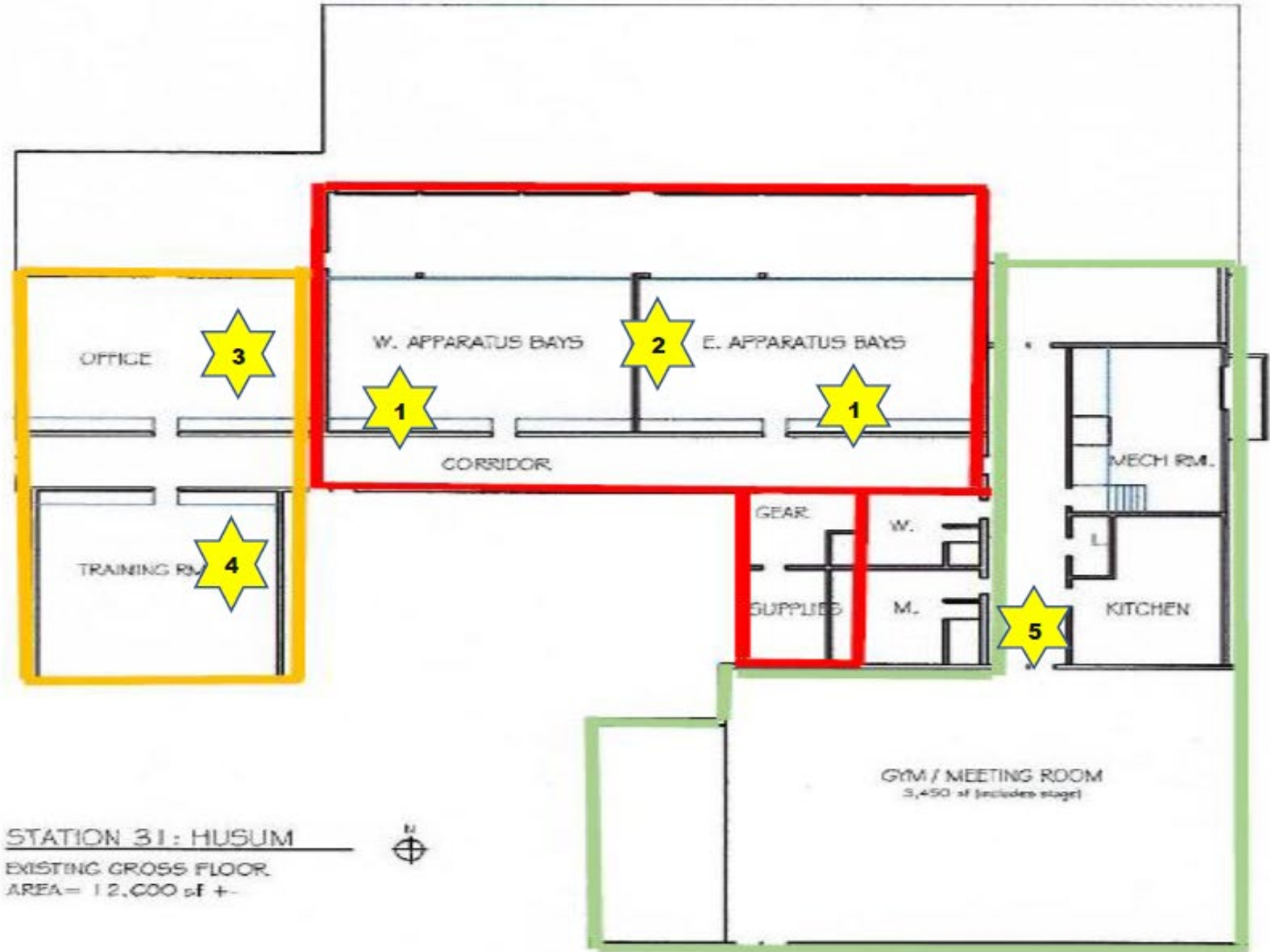
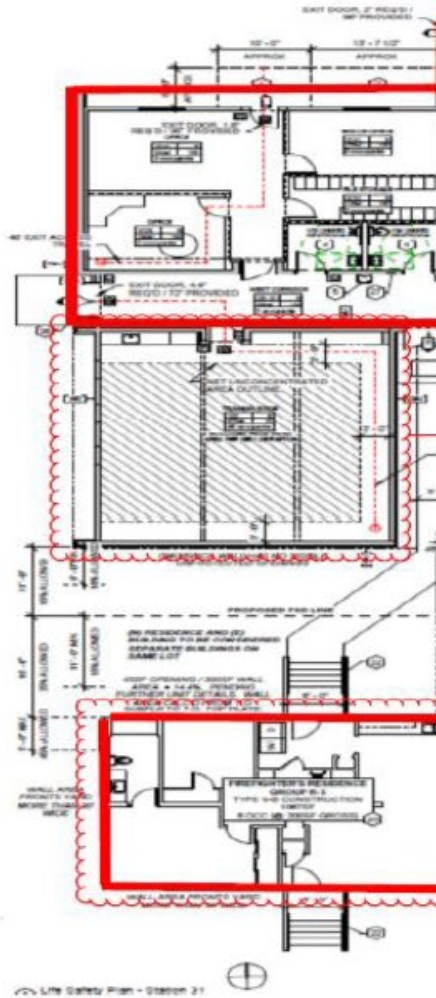


K-3 Fire Station #31

“MITIGATION MOBILIZATION PLAN”



Station #31 Base



| STAR | LOCATION | DESCRIPTION | MOBE-MITIGATION | PRIORITY <input type="checkbox"/> High <input type="checkbox"/> Medium <input type="checkbox"/> Low |
|------|---------------------------|---|--|--|
| 1 | ➔ Rear of apparatus bays | 1. Storage of spare firehose; appliances; equipment; supplies; junk | OPTION #1: SORT/TRIAGE/SURPLUS unserviceable materials. KEEP all useable items and move to remote location (gym? Container? Stage?) | |
| 1 | ➔ Rear of apparatus bays | 1. PPE | OPTION #1: Issue personal PPE to each member to take home or carry in car. ** (See comments below for concerns) OPTION #2: Purchase budgeted Stat 31 (rolling) READY-RACKS and place in future designated area (See ++ Note) | |
| 1 | ➔ Rear of apparatus bays | 1. SCBA compressor | OPTION #1: Send off for repair OPTION #2: Remote storage for future serviceability eval | |
| 1 | ➔ Rear of apparatus bays | 1. Refrigerator 2. W/S Fire engine | OPTION #1: Relocate to gymnasium (<i>Is refer going to be a part of the future operational mode when remodel is done?</i>) OPTION #2: Surplus | |
| 2 | Center wall [maintenance] | 1. Maintenance supplies | OPTION #1: Triaged; stored in secure location (Gym; stage?) | |
| 2 | Center wall [maintenance] | 1. Workbench; cabinets; appurtenances | SURPLUSSED and REMOVED | |
| 3 | Admin Office | COMPLETE relocation of Admin/Executive Office (<i>relocation should remain in effect until such time as Admin remodel/reconstruction is complete</i>) | OPTION #1: Reconfigure Training Room to accommodate Exec/Admin Staff and Board areas. Temp CAT5 runs for IT/phone/power strips. TEMPORARY detour of public access/restriction to hallway; HVAC repairs (?) OPTION #2: Establish Modular Office/Dorm pad and purchase/set structure on pad; add ramp and amenities; move Exec/Admin to modular structure | |
| 4 | Board/Training room | PREPARATION for Admin move in; no PBS mitigation efforts in Training Room. Lighting replacement at the time of actual Baseline construction | | |
| 5 | East Hillwy/lavs/kit | 1. Preparation for ceiling removal at the gym wall. 2. | REMOVAL and/or RELOCATION of all items in hallway. PBS to remove 4 feet of ceiling entire gym wall area. | |
| | | | | |

**** 1.** Potential for Volunteers to lose response STATE OF READINESS if PPE is inadvertently left at home or they drive a different vehicle with PPE left in primary vehicle.

1. Potential contamination of personal residence, garage, vehicle
2. Potential theft of PPE from vehicles

++ W/S old fire engine must be removed for now-and-future PPE staging space

Interested Parties:

- Skagit 13
- Discovery Bay
- Lyle
- Benton 2



O.F.C.I

OWNER FURNISHED CONTACTOR INSTALLED



| ITEM | Quantity | Details | Provider |
|------------------------------------|-----------------|----------------|-----------------|
| ELECTRONICS | | | |
| Emergency generators | | | |
| Gen controls | | | |
| Fire/security systems | | | |
| IT/Data racks | | | |
| Telephone/intercom system | | | |
| Ops Base radios | | | |
| 45' Base Radio Antenna Towers | | | |
| Station alerting sirens | | | |
| BUILDING EQUIPMENT | | | |
| Call boxes | | | |
| Station #32 apparatus doors/motors | | | |
| Digital display | | | |
| Decon extractor | | | |
| SCBA compressor | | | |
| Door locks | | | |
| Exhaust systems | | | |
| PPE racks/benches | | | |
| Hose racks | | | |
| White boards/cork boards | | | |
| Hanging racks | | | |
| Signage | | | |
| GROUNDS/SITE | | | |
| Propane tanks | | | |
| Landscaping | | | |
| APPLIANCES | | | |
| Kitchen refrigerator | | | |
| Kitchen stoves | | | |
| FURNITURE | | | |
| Meeting Room tables and chairs | | | |
| Ops Office chairs | | | |
| Ops map rack | | | |



TIMING



DISCOVERY
(Done)

Design &
Construction
Drawings

Haz Mat Survey &
Mitigation
(Clean Air Certificate)

Permits
Bids
Award



Last Slide

| | |
|--------------|--------------|
| \$ 1,000,000 | Equipment |
| \$ 1,600,000 | Construction |
| \$ 256,000 | Sales Tax |
| \$ 160,000 | Pro fees |

October 1st, 2019

K-3 Capital Projects Funds

