

December 9th Board Meeting

R. A. Merritt

Senior Consultant



mHc Associates

“professional emergency services consultants”



PROJECT REPORT

1. Sta #31 UPDATE

- a. Power– Gensets-Heat**
- b. Interior**
- c. Towers**
- d. Site**









SJIII 3215

















MEMO



DATE:	November 22, 2021
TO:	Board of Commissioners
FROM:	R. Merritt
RE:	FOLLOW-UP: Rain Garden Protocol

Per our earlier conversation and presentation, Chief Long and I have developed an immediate and long-term “Monitoring & Mitigation Plan” for the infamous Station #31 RAIN GARDEN.

FACTS:

1. Station #31 RAIN GARDEN is just ONE ELEMENT of the designed and permitted KCFD#3 Station #31 Stormwater control plan
2. Station #31 RAIN GARDEN [due to influent line elevation] was designed to be 13 times larger in size and capacity than required for a 100 YEAR STORM EVENT

MONITORING

1. Station #31 Staff and Members will regularly monitor the stormwater storage depth, flow, and general Rain Garden structural condition on a periodic basis with the frequency thereof increased during storm events
2. Incremental “watch points” will be installed to monitor storage capacity and monitor percolation rates as the water is dissipated into the ground
3. During “heavy events” daily monitoring will continue with photographic and linear measurements recorded to develop a historical proficiency model and record of the Garden

MITIGATION

1. In heavy storm events where accumulations of storm water impinge on established guide markers, the following steps will be employed to ensure control and mitigation of stormwater flow to prevent overflow and erosion:

Level 1	Increase monitoring frequency
Level 2	Employ KCFD#3 TRASH PUMP—pump water to West swale
Level 3	Employ KCFD#3 Fire Apparatus—[draft] transfer stormwater to West swale
Level 4	Employ excavation of emergency swale; tie into West stormwater control

[Type the sender e-mail address]

[TYPE THE SENDER COMPANY NAME]



PROJECT REPORT

1. Station #32 UPDATE
 - a. Power
 - b. Roof
 - c. Heat
 - d. Interior
 - e. Storm water

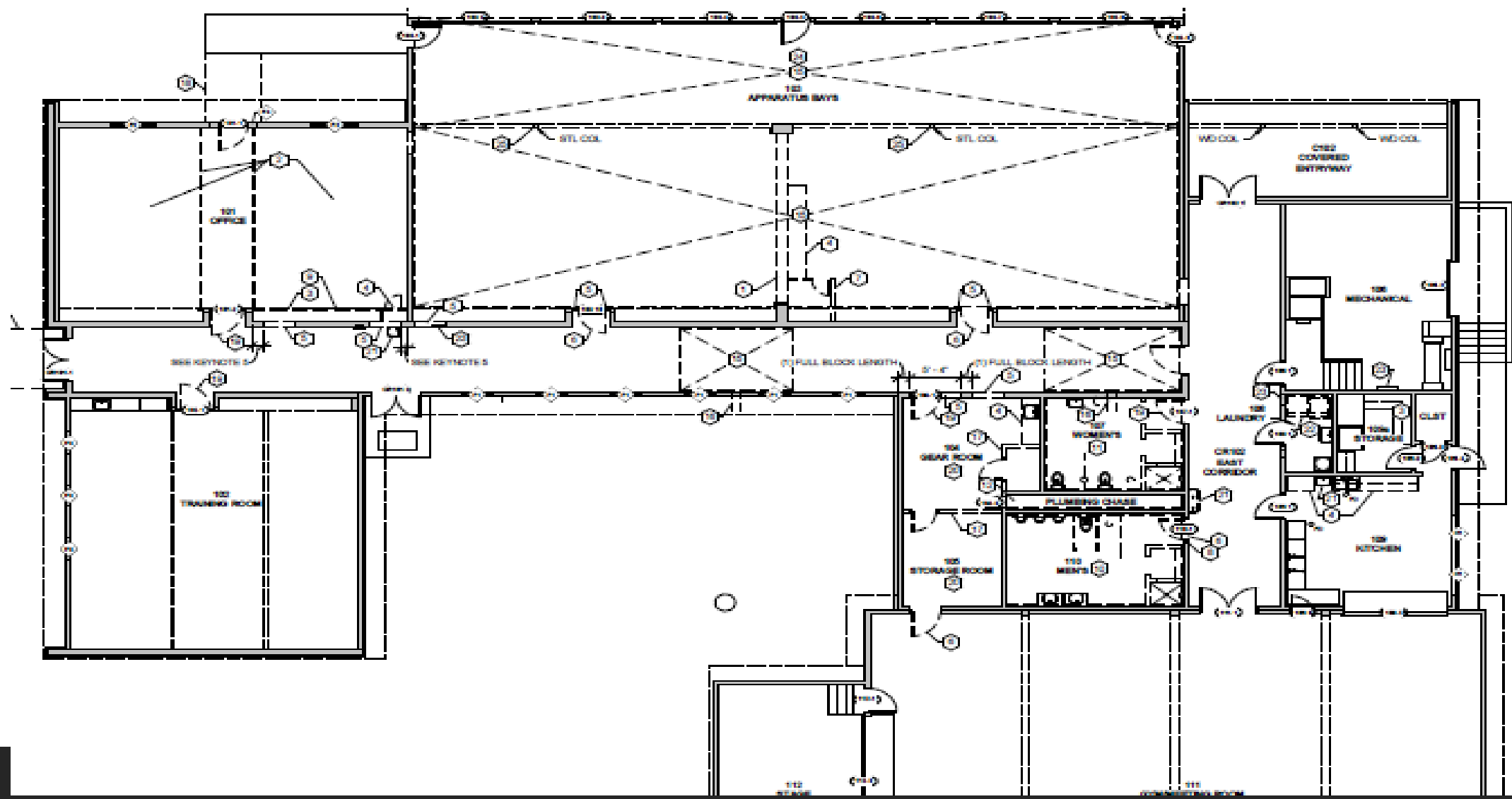
Station #32

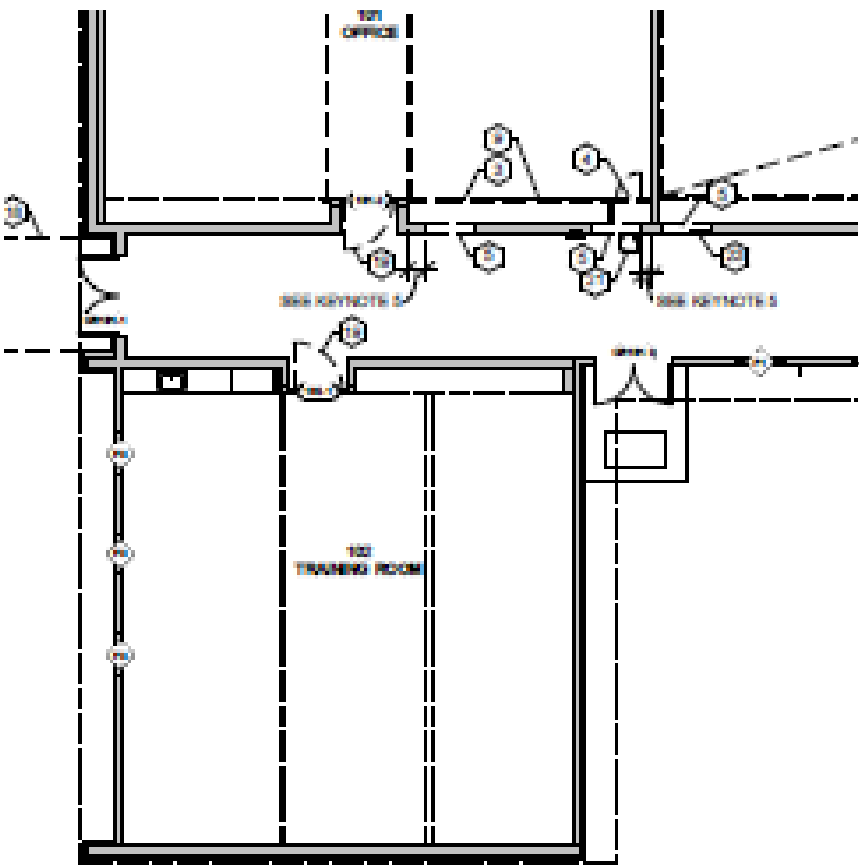


PROJECT REPORT

- 1. Change Orders**
- 2. Station #31 Bid Alternates**

Bid Alternates

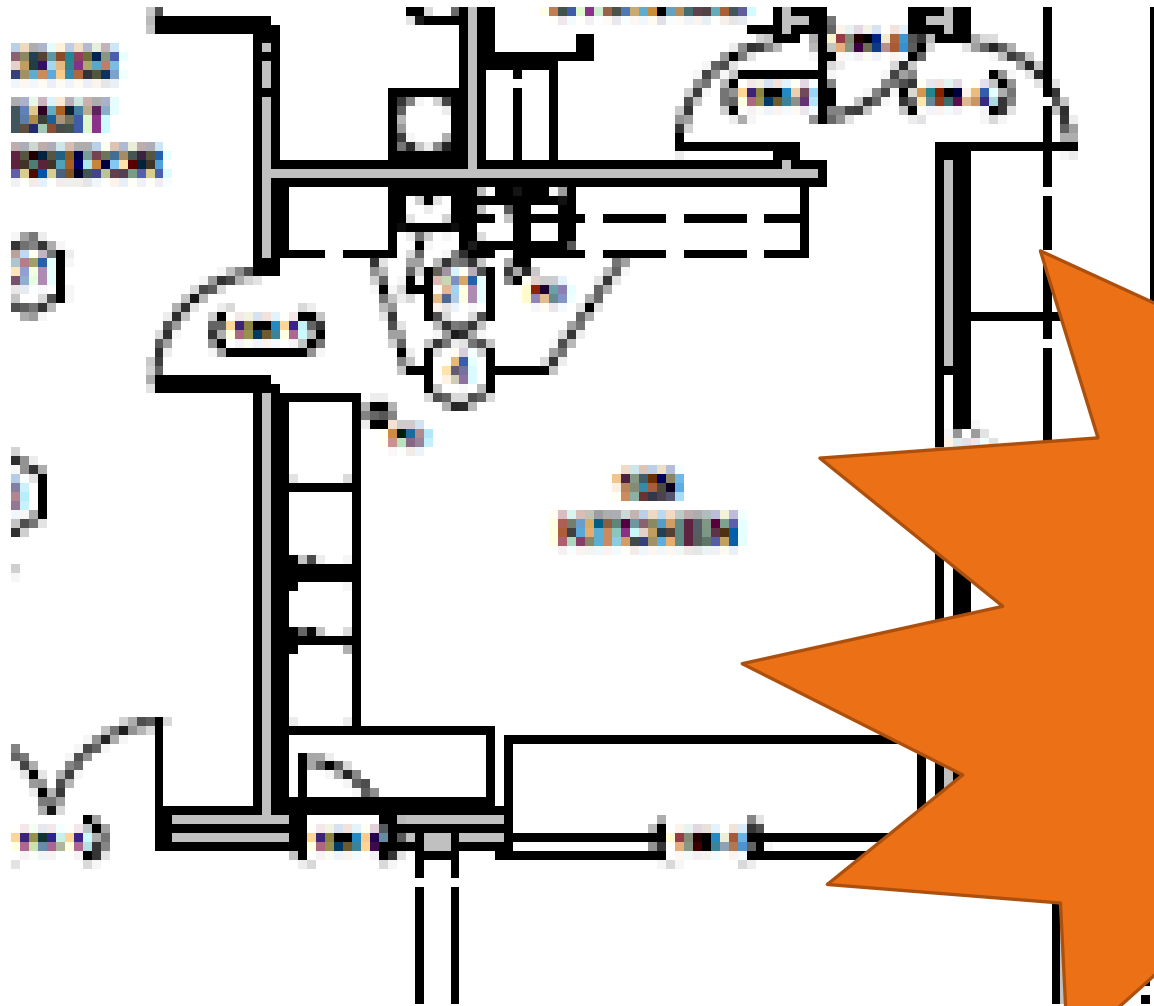






\$22,234





\$12,121

